

## The Pigler 500X Series Pressure Reducing Valve

**Size:** 1/2"

**Weight:** 1.5 kg

**Material:** Brass

**Exterior Finish:** Brass

### Key Features:

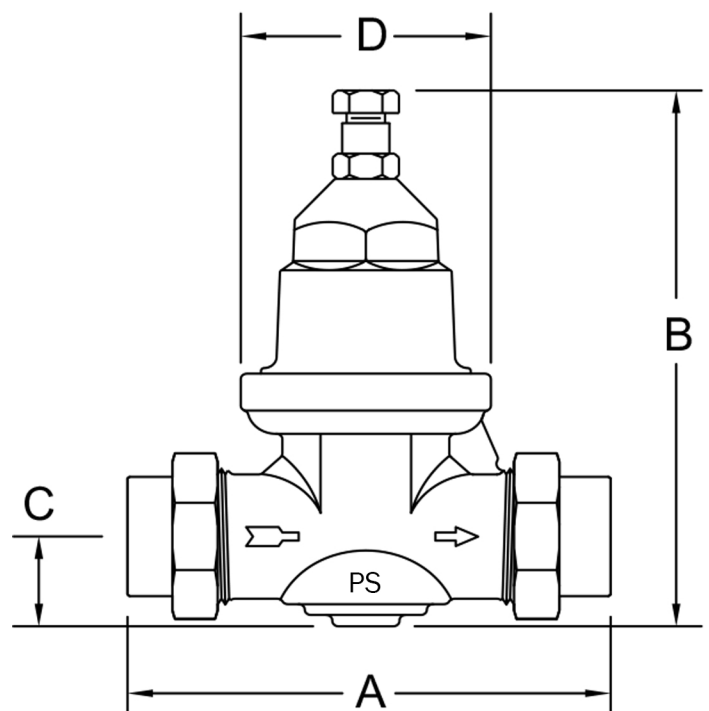
**1. High Flow Rates and Low Pressure Fall-Off:** The hallmark of the Pigler 500X Series is its impressive combination of high flow rates and minimal pressure fall-off. This exceptional performance ensures consistent and reliable pressure reduction, even in demanding scenarios.

**2. Commercial and Industrial Versatility:** Designed to excel in commercial and industrial settings, the 500X Series is a versatile solution for pressure reduction applications. It effectively addresses the unique demands of these sectors, providing optimal performance and reliability.

**3. Next Generation Advancements:** Introducing the latest addition to the 500X Series – the 750X model. This next-generation model represents a leap forward in performance and innovation, offering cutting-edge features and enhanced capabilities.

The Pigler Sun 500X Series Pressure Reducing Valve is your go-to choice for achieving high flow rates and maintaining low pressure fall-off in commercial and industrial environments. With the introduction of the advanced 750X model, the series continues to evolve, pushing the boundaries of performance and meeting the evolving needs of modern pressure reduction applications.

DIMENSIONS	VALUE (mm)
A	111
B	160
C	30
D	65



### The Pigler 500X Series Pressure Reducing Valve

**Size:** 3/4"

**Weight:** 1.5 kg

**Material:** Brass

**Exterior Finish:** Brass

#### Key Features:

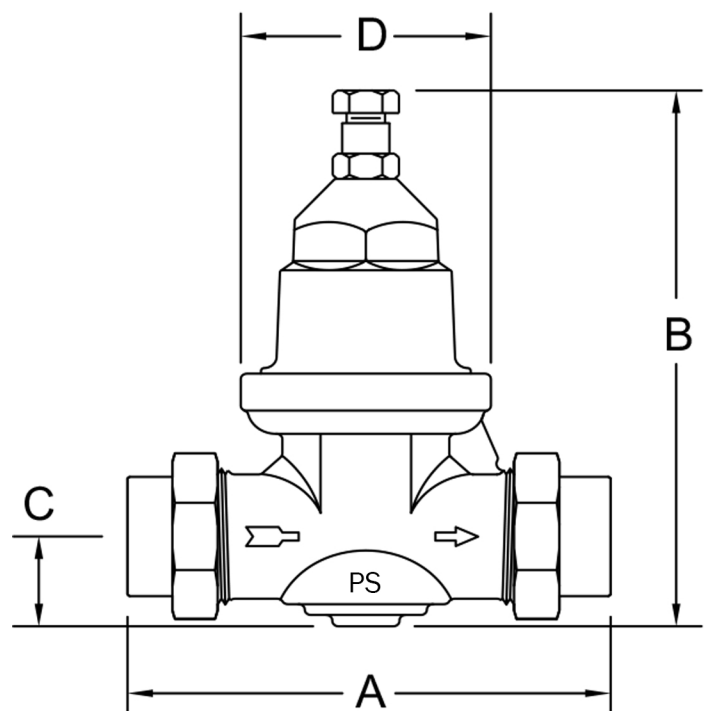
**1. High Flow Rates and Low Pressure Fall-Off:** The hallmark of the Pigler 500X Series is its impressive combination of high flow rates and minimal pressure fall-off. This exceptional performance ensures consistent and reliable pressure reduction, even in demanding scenarios.

**2. Commercial and Industrial Versatility:** Designed to excel in commercial and industrial settings, the 500X Series is a versatile solution for pressure reduction applications. It effectively addresses the unique demands of these sectors, providing optimal performance and reliability.

**3. Next Generation Advancements:** Introducing the latest addition to the 500X Series – the 750X model. This next-generation model represents a leap forward in performance and innovation, offering cutting-edge features and enhanced capabilities.

The Pigler Sun 500X Series Pressure Reducing Valve is your go-to choice for achieving high flow rates and maintaining low pressure fall-off in commercial and industrial environments. With the introduction of the advanced 750X model, the series continues to evolve, pushing the boundaries of performance and meeting the evolving needs of modern pressure reduction applications.

DIMENSIONS	VALUE (mm)
A	113
B	160
C	30
D	65



## The Pigler 500X Series Pressure Reducing Valve

**Size:** 1"

**Weight:** 2 kg

**Material:** Brass

**Exterior Finish:** Brass

### Key Features:

**1. High Flow Rates and Low Pressure Fall-Off:** The hallmark of the Pigler 500X Series is its impressive combination of high flow rates and minimal pressure fall-off. This exceptional performance ensures consistent and reliable pressure reduction, even in demanding scenarios.

**2. Commercial and Industrial Versatility:** Designed to excel in commercial and industrial settings, the 500X Series is a versatile solution for pressure reduction applications. It effectively addresses the unique demands of these sectors, providing optimal performance and reliability.

**3. Next Generation Advancements:** Introducing the latest addition to the 500X Series – the 750X model. This next-generation model represents a leap forward in performance and innovation, offering cutting-edge features and enhanced capabilities.

The Pigler Sun 500X Series Pressure Reducing Valve is your go-to choice for achieving high flow rates and maintaining low pressure fall-off in commercial and industrial environments. With the introduction of the advanced 750X model, the series continues to evolve, pushing the boundaries of performance and meeting the evolving needs of modern pressure reduction applications.

DIMENSIONS	VALUE (mm)
A	128
B	160
C	30
D	65

